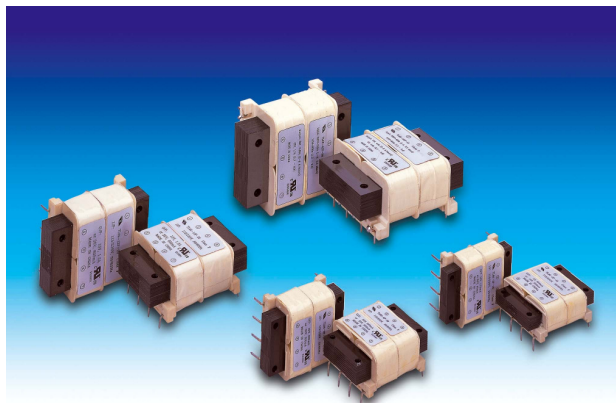




# THAI LIN RADIO

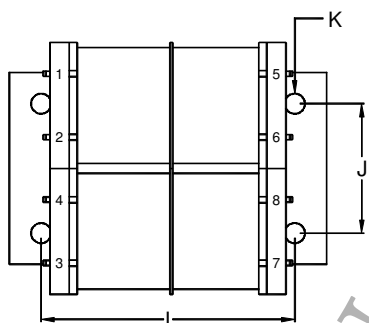
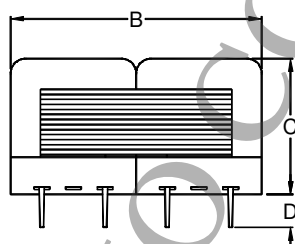
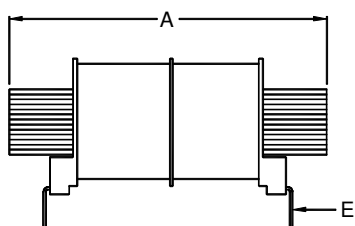
since 1975

Трансформатор  
двухкаркасный  
TWIN-BOBBIN  
TRANSFORMER

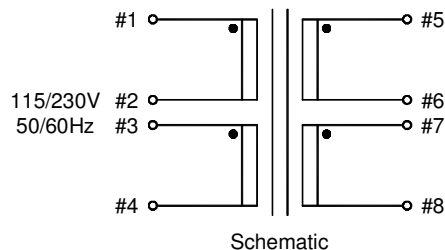
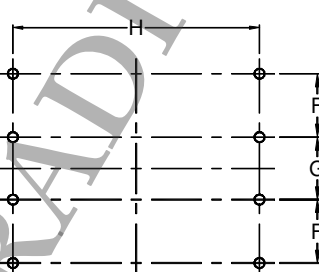


## TL66 Series

- Power – 2VA to 48VA
- Dielectric strength – 1500Vrms
- Primary – Dual primary (115V/230V 50/60Hz)
- Secondary – Series or parallel
- Insulation class – Class F (155°C)
- Agency approvals – UL506, CSA C22.2 #66



Bottom View



Product Series	Dimension (mm)											Weight (g)
	A	B	C	D	E	F	G	H	I	J	K	
2 VA	48.5	40.0	17.5	5.5	0.5x1.0	9.5	9.5	40.6	41.24	22.2	Ø2.8	95
6 VA	48.5	40.0	22.6	5.5	0.5x1.0	9.5	9.5	40.6	41.24	22.2	Ø2.8	135
12 VA	64.5	51.8	28.0	5.5	0.5x1.0	12.7	12.7	50.8	50.8	25.7	Ø3.5	300
48 VA	81.0	64.5	35.4	6.35	1.0x1.0	15.24	16.8	55.4	64.0	32.0	Ø4.5	630
<b>Tolerance</b>	max.	max.	max.	±1.0	±0.2	±0.3	±0.3	±0.5	±0.5	±0.5	max.	approx.

Note : Dimension " E " is pin size, and dimension " K " is the maximum allowable screw size.



# THAI LIN RADIO since 1975

TWIN-BOBBIN  
TRANSFORMER

Product Series	Part Number	Primary (V)	Secondary RMS Rating	
			Series	Parallel
2 VA	TL66-2F-10	2 x 115	10V @ 0.25A	5V @ 0.5A
	TL66-2F-12		12.6V @ 0.2A	6.3V @ 0.4A
	TL66-2F-16		16V @ 0.15A	8V @ 0.3A
	TL66-2F-20		20V @ 0.12A	10V @ 0.25A
	TL66-2F-24		24V @ 0.1A	12V @ 0.2A
	TL66-2F-30		30V @ 0.085A	15V @ 0.17A
	TL66-2F-34		34V @ 0.075A	17V @ 0.15A
	TL66-2F-40		40V @ 0.06A	20V @ 0.12A
	TL66-2F-56		56V @ 0.045A	28V @ 0.09A
	TL66-2F-88		88V @ 0.028A	44V @ 0.056A
	TL66-2F-120		120V @ 0.02A	60V @ 0.04A
	TL66-2F-230		230V @ 0.01A	115V @ 0.02A
	6 VA		TL66-6F-10	2 x 115
TL66-6F-12		12.6V @ 0.45A	6.3V @ 0.9A	
TL66-6F-16		16V @ 0.35A	8V @ 0.7A	
TL66-6F-20		20V @ 0.3A	10V @ 0.6A	
TL66-6F-24		24V @ 0.25A	12V @ 0.5A	
TL66-6F-30		30V @ 0.2A	15V @ 0.4A	
TL66-6F-34		34V @ 0.17A	17V @ 0.34A	
TL66-6F-40		40V @ 0.15A	20V @ 0.3A	
TL66-6F-56		56V @ 0.1A	28V @ 0.2A	
TL66-6F-88		88V @ 0.065A	44V @ 0.13A	
TL66-6F-120		120V @ 0.05A	60V @ 0.1A	
TL66-6F-230		230V @ 0.025A	115V @ 0.05A	
12 VA		TL66-12F-10	2 x 115	
	TL66-12F-12	12.6V @ 0.9A		6.3V @ 1.8A
	TL66-12F-16	16V @ 0.7A		8V @ 1.4A
	TL66-12F-20	20V @ 0.6A		10V @ 1.2A
	TL66-12F-24	24V @ 0.5A		12V @ 1A
	TL66-12F-30	30V @ 0.4A		15V @ 0.8A
	TL66-12F-34	34V @ 0.34A		17V @ 0.68A
	TL66-12F-40	40V @ 0.3A		20V @ 0.6A
	TL66-12F-56	56V @ 0.2A		28V @ 0.4A
	TL66-12F-88	88V @ 0.13A		44V @ 0.26A
	TL66-12F-120	120V @ 0.1A		60V @ 0.2A
	TL66-12F-230	230V @ 0.05A		115V @ 0.1A
	48 VA	TL66-48F-10		2 x 115
TL66-48F-12		12.6V @ 3.8A	6.3V @ 7.6A	
TL66-48F-16		16V @ 3A	8V @ 6A	
TL66-48F-20		20V @ 2.4A	10V @ 4.8A	
TL66-48F-24		24V @ 2A	12V @ 4A	
TL66-48F-30		30V @ 1.6A	15V @ 3.2A	
TL66-48F-34		34V @ 1.4A	17V @ 2.8A	
TL66-48F-40		40V @ 1.2A	20V @ 2.4A	
TL66-48F-56		56V @ 0.85A	28V @ 1.7A	