



## Катушки и полосы антенные ANTENNA BAR – AP TYPE

### (1) ORDERING CODE

EA2G AP 2 × 8 × 45

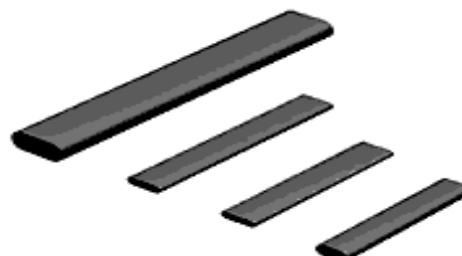
Material \_\_\_\_\_

Type \_\_\_\_\_

Outside Diameter C \_\_\_\_\_

Width B \_\_\_\_\_

Length A \_\_\_\_\_



### (2) SUITABLE MATERIAL

EA2G EQ2M EL8H EQ5B

### (3) SHAPE AND DIMENSIONS



UNIT: MM

CORES	A	B	C
AP 1.7×8×40	40.00±0.80	1.70 <sup>+0</sup> <sub>-0.3</sub>	8.00 <sup>+0</sup> <sub>-0.4</sub>
AP 1.9×3×49	49.00±1.00	1.90 <sup>+0</sup> <sub>-0.3</sub>	3.00 <sup>+0</sup> <sub>-0.3</sub>
AP 1.9×3×50	50.00±1.00	1.90 <sup>+0</sup> <sub>-0.3</sub>	3.00 <sup>+0</sup> <sub>-0.3</sub>
AP 2×8×40	40.00±0.80	2.00 <sup>+0</sup> <sub>-0.3</sub>	8.00 <sup>+0</sup> <sub>-0.4</sub>
AP 2×8×45	45.00±1.00	2.00 <sup>+0</sup> <sub>-0.3</sub>	8.00 <sup>+0</sup> <sub>-0.4</sub>
AP 2×8×50	50.00±1.00	2.00 <sup>+0</sup> <sub>-0.3</sub>	8.00 <sup>+0</sup> <sub>-0.4</sub>
AP 3×5×40	40.00±0.80	3.00 <sup>+0</sup> <sub>-0.3</sub>	5.00 <sup>+0</sup> <sub>-0.3</sub>
AP 3×6×35	35.00±0.80	3.00 <sup>+0</sup> <sub>-0.3</sub>	6.00 <sup>+0</sup> <sub>-0.4</sub>
AP 3×7×36	36.00±0.80	3.00 <sup>+0</sup> <sub>-0.3</sub>	7.00 <sup>+0</sup> <sub>-0.4</sub>
AP 3×8×25	25.00±0.50	3.00 <sup>+0</sup> <sub>-0.3</sub>	8.00 <sup>+0</sup> <sub>-0.4</sub>
AP 3×8×30	30.00±0.50	3.00 <sup>+0</sup> <sub>-0.3</sub>	8.00 <sup>+0</sup> <sub>-0.4</sub>
AP 3×8×40	40.00±0.80	3.00 <sup>+0</sup> <sub>-0.3</sub>	8.00 <sup>+0</sup> <sub>-0.4</sub>
AP 3×8×50	50.00±1.00	3.00 <sup>+0</sup> <sub>-0.3</sub>	8.00 <sup>+0</sup> <sub>-0.4</sub>
AP 4×4.5×35	35.00±0.80	4.00 <sup>+0</sup> <sub>-0.3</sub>	4.50 <sup>+0</sup> <sub>-0.3</sub>
AP 4×4.5×45	45.00±1.00	4.00 <sup>+0</sup> <sub>-0.3</sub>	4.50 <sup>+0</sup> <sub>-0.3</sub>



## ANTENNA BAR – AP TYPE

CORES	A	B	C
AP 4×4.5×50	50.00±1.00	4.00 <sup>+0</sup> <sub>-0.3</sub>	4.50 <sup>+0</sup> <sub>-0.3</sub>
AP 4×5×50	50.00±1.00	4.00 <sup>+0</sup> <sub>-0.3</sub>	5.00 <sup>+0</sup> <sub>-0.3</sub>
AP 4×6×30	30.00±0.50	4.00 <sup>+0</sup> <sub>-0.3</sub>	6.00 <sup>+0</sup> <sub>-0.4</sub>
AP 4×6×33	33.00±0.50	4.00 <sup>+0</sup> <sub>-0.3</sub>	6.00 <sup>+0</sup> <sub>-0.4</sub>
AP 4×8×34.5	34.50±0.50	4.00 <sup>+0</sup> <sub>-0.3</sub>	8.00 <sup>+0</sup> <sub>-0.4</sub>
AP 4×8×35	35.00±0.80	4.00 <sup>+0</sup> <sub>-0.3</sub>	8.00 <sup>+0</sup> <sub>-0.4</sub>
AP 4×8×40	40.00±0.80	4.00 <sup>+0</sup> <sub>-0.3</sub>	8.00 <sup>+0</sup> <sub>-0.4</sub>
AP 4×8×45	45.00±1.00	4.00 <sup>+0</sup> <sub>-0.3</sub>	8.00 <sup>+0</sup> <sub>-0.4</sub>
AP 4×8×50	50.00±1.00	4.00 <sup>+0</sup> <sub>-0.3</sub>	8.00 <sup>+0</sup> <sub>-0.4</sub>
AP 4×10×40	40.00±0.80	4.00 <sup>+0</sup> <sub>-0.3</sub>	10.0 <sup>+0</sup> <sub>-0.4</sub>
AP 4×10×45	45.00±1.00	4.00 <sup>+0</sup> <sub>-0.3</sub>	10.0 <sup>+0</sup> <sub>-0.4</sub>
AP 4×10×50	50.00±1.00	4.00 <sup>+0</sup> <sub>-0.3</sub>	10.0 <sup>+0</sup> <sub>-0.4</sub>
AP 4×12×50	50.00±1.00	4.00 <sup>+0</sup> <sub>-0.3</sub>	12.0 <sup>+0</sup> <sub>-0.4</sub>
AP 4×13×55	55.00±1.00	4.00 <sup>+0</sup> <sub>-0.3</sub>	13.0 <sup>+0</sup> <sub>-0.4</sub>
AP 5×6×25	25.00±0.50	5.00 <sup>+0</sup> <sub>-0.3</sub>	6.00 <sup>+0</sup> <sub>-0.4</sub>
AP 5×6×30	30.00±0.50	5.00 <sup>+0</sup> <sub>-0.3</sub>	6.00 <sup>+0</sup> <sub>-0.4</sub>
AP 5×6×32	32.00±0.50	5.00 <sup>+0</sup> <sub>-0.3</sub>	6.00 <sup>+0</sup> <sub>-0.4</sub>
AP 5×6×35	35.00±0.50	5.00 <sup>+0</sup> <sub>-0.3</sub>	6.00 <sup>+0</sup> <sub>-0.4</sub>
AP 5×8×45	45.00±1.00	5.00 <sup>+0</sup> <sub>-0.3</sub>	8.00 <sup>+0</sup> <sub>-0.4</sub>
AP 5×8×47.5	47.50±1.00	5.00 <sup>+0</sup> <sub>-0.3</sub>	8.00 <sup>+0</sup> <sub>-0.4</sub>
AP 5×8×50	50.00±1.00	5.00 <sup>+0</sup> <sub>-0.3</sub>	8.00 <sup>+0</sup> <sub>-0.4</sub>
AP 5×8×60	60.00±1.00	5.00 <sup>+0</sup> <sub>-0.3</sub>	8.00 <sup>+0</sup> <sub>-0.4</sub>
AP 7×8×49	49.00±1.00	7.00 <sup>+0</sup> <sub>-0.4</sub>	8.00 <sup>+0</sup> <sub>-0.4</sub>



# ANTENNA BAR – AR TYPE

(1) ORDERING CODE

EA2G AR 8 × 100

Material \_\_\_\_\_

Type \_\_\_\_\_

Outside Diameter C \_\_\_\_\_

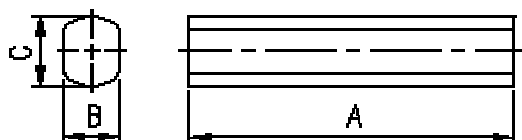
Length A \_\_\_\_\_



(2) SUITABLE MATERIAL

EA2G EQ2M EL8H EQ5B

(3) SHAPE AND DIMENSIONS



UNIT: MM

CORES	A	B	C
AR 3×32	32.00±0.50	3.00 <sup>+0</sup> <sub>-0.2</sub>	3.00 <sup>+0</sup> <sub>-0.3</sub>
AR 3×38	38.00±0.50	3.00 <sup>+0</sup> <sub>-0.2</sub>	3.00 <sup>+0</sup> <sub>-0.3</sub>
AR 4×40	40.00±1.00	4.00 <sup>+0</sup> <sub>-0.2</sub>	4.00 <sup>+0</sup> <sub>-0.3</sub>
AR 6×40	40.00±1.00	5.00 <sup>+0</sup> <sub>-0.2</sub>	6.00 <sup>+0</sup> <sub>-0.4</sub>
AR 6×50	50.00±1.00	5.00 <sup>+0</sup> <sub>-0.2</sub>	6.00 <sup>+0</sup> <sub>-0.4</sub>
AR 7×77	77.00 <sup>+2.0</sup> <sub>-0</sub>	6.00 <sup>+0.5</sup> <sub>-0</sub>	7.00 <sup>+0</sup> <sub>-0.4</sub>
AR 8×40	40.00±1.00	7.00 <sup>+0</sup> <sub>-0.3</sub>	8.00 <sup>+0.1</sup> <sub>-0.4</sub>
AR 8×45	45.00±1.00	7.00 <sup>+0</sup> <sub>-0.3</sub>	8.00 <sup>+0.1</sup> <sub>-0.4</sub>
AR 8×50	50.00±1.00	7.00 <sup>+0</sup> <sub>-0.4</sub>	8.00 <sup>+0</sup> <sub>-0.5</sub>
AR 8×55	55.00±1.00	7.00 <sup>+0</sup> <sub>-0.3</sub>	8.00 <sup>+0.1</sup> <sub>-0.4</sub>
AR 8×60	60.00±1.00	7.00 <sup>+0</sup> <sub>-0.3</sub>	8.00 <sup>+0.1</sup> <sub>-0.4</sub>
AR 8×70	70.00±1.00	7.00 <sup>+0</sup> <sub>-0.3</sub>	8.00 <sup>+0.1</sup> <sub>-0.4</sub>
AR 8×75	75.00±1.00	7.00 <sup>+0</sup> <sub>-0.3</sub>	8.00 <sup>+0.1</sup> <sub>-0.4</sub>
AR 8×80	80.00±1.00	7.00 <sup>+0</sup> <sub>-0.3</sub>	8.00 <sup>+0.1</sup> <sub>-0.4</sub>
AR 8×90	90.00±1.50	7.00 <sup>+0</sup> <sub>-0.3</sub>	8.00 <sup>+0.1</sup> <sub>-0.4</sub>
AR 8×100	100.0±1.50	7.00 <sup>+0</sup> <sub>-0.3</sub>	8.00 <sup>+0.1</sup> <sub>-0.4</sub>
AR 10×30	30.00±1.00	9.00 <sup>+0</sup> <sub>-0.3</sub>	10.00 <sup>+0</sup> <sub>-0.4</sub>



## ANTENNA BAR – AR TYPE

CORES	A	B	C
AR 10×50	50.00±1.00	9.00 <sup>+0</sup> <sub>-0.3</sub>	10.00 <sup>+0</sup> <sub>-0.4</sub>
AR 10×55	55.00±1.00	9.00 <sup>+0</sup> <sub>-0.3</sub>	10.00 <sup>+0</sup> <sub>-0.4</sub>
AR 10×60	60.00±1.00	9.00 <sup>+0</sup> <sub>-0.3</sub>	10.0 <sup>+0</sup> <sub>-0.4</sub>
AR 10×70	70.00±1.50	9.00 <sup>+0</sup> <sub>-0.3</sub>	10.00 <sup>+0</sup> <sub>-0.4</sub>
AR 10×80	80.00±1.50	9.00 <sup>+0</sup> <sub>-0.3</sub>	10.00 <sup>+0</sup> <sub>-0.4</sub>
AR 10×90	90.00±1.50	9.00 <sup>+0</sup> <sub>-0.3</sub>	10.00 <sup>+0</sup> <sub>-0.4</sub>
AR 10×100	100.00±2.00	9.00 <sup>+0</sup> <sub>-0.3</sub>	10.00 <sup>+0</sup> <sub>-0.4</sub>
AR 10×120	120.00±2.00	9.00 <sup>+0</sup> <sub>-0.3</sub>	10.00 <sup>+0</sup> <sub>-0.4</sub>
AR 10×140	140.00±2.00	9.00 <sup>+0</sup> <sub>-0.3</sub>	10.00 <sup>+0</sup> <sub>-0.4</sub>
AR 12×120	120.00±2.00	11.00 <sup>+0</sup> <sub>-0.5</sub>	12.00 <sup>+0</sup> <sub>-0.6</sub>
AR 12×200	200.00±2.50	11.00 <sup>+0</sup> <sub>-0.5</sub>	12.00 <sup>+0</sup> <sub>-0.6</sub>