

# THAI LIN RADIO

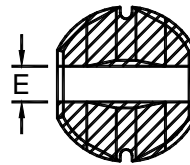
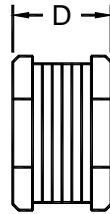
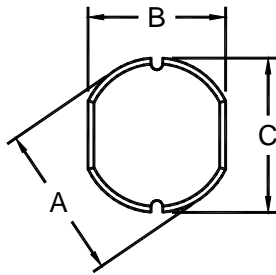
since 1975

Индуктивность SMT  
(SMT POWER  
INDUCTOR)

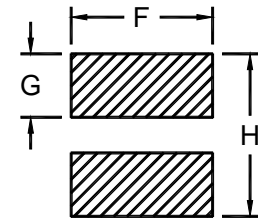


## TL91 Series

- High current capacity
- Low profile and Flat top for SMD
- Low core loss for high frequency power application
- Large terminal surface for good PCB bonding
- Temperature Range: -40°C to +85°C
- Custom-made inductors are available upon request.



Bottom View



Suggested  
Soldering Pads

Product Series	Dimension (mm)								Weight (g)
	A	B	C	D	E	F	G	H	
TL91-1	∅4.5	4.0	4.5	3.2	1.3	4.2	1.8	4.9	0.2
TL91-2	∅5.8	5.2	5.8	4.5	1.5	5.4	2.4	6.2	0.5
TL91-3	∅7.8	7.0	7.8	3.5	1.8	7.2	3.2	8.2	0.7
TL91-4	∅7.8	7.0	7.8	5.0	1.8	7.2	3.2	8.2	1.0
TL91-5	∅10.0	9.0	10.0	5.4	2.5	9.2	4.0	10.4	1.7
Tolerance	±0.3	±0.3	±0.3	±0.3	±0.3	±0.3	±0.3	±0.3	approx.



# THAI LIN RADIO

since 1975

SMT POWER  
INDUCTOR

Part Number	Inductance (μH)	Test Frequency	DCR (Ω, max.)	Rated Current (A DC)	Part Number	Inductance (μH)	Test Frequency	DCR (Ω, max.)	Rated Current (A DC)
TL91-1-102M	1.0 ± 20%	7.96 MHz	0.048	2.7	TL91-1-103M	10 ± 20%	2.52 MHz	0.182	1.1
TL91-1-152M	1.5 ± 20%	7.96 MHz	0.056	2.6	TL91-1-123M	12 ± 20%	2.52 MHz	0.210	0.97
TL91-1-182M	1.8 ± 20%	7.96 MHz	0.063	2.0	TL91-1-153M	15 ± 20%	2.52 MHz	0.235	0.85
TL91-1-222M	2.2 ± 20%	7.96 MHz	0.071	1.9	TL91-1-183M	18 ± 20%	2.52 MHz	0.338	0.74
TL91-1-272M	2.7 ± 20%	7.96 MHz	0.078	1.8	TL91-1-223M	22 ± 20%	2.52 MHz	0.378	0.68
TL91-1-332M	3.3 ± 20%	7.96 MHz	0.086	1.7	TL91-1-273M	27 ± 20%	2.52 MHz	0.522	0.62
TL91-1-392M	3.9 ± 20%	7.96 MHz	0.093	1.6	TL91-1-333K	33 ± 10%	2.52 MHz	0.540	0.56
TL91-1-472M	4.7 ± 20%	7.96 MHz	0.108	1.5	TL91-1-393K	39 ± 10%	2.52 MHz	0.587	0.52
TL91-1-562M	5.6 ± 20%	7.96 MHz	0.125	1.4	TL91-1-473K	47 ± 10%	2.52 MHz	0.844	0.44
TL91-1-682M	6.8 ± 20%	7.96 MHz	0.131	1.3	TL91-1-563K	56 ± 10%	2.52 MHz	0.937	0.42
TL91-1-822M	8.2 ± 20%	7.96 MHz	0.146	1.2	TL91-1-683K	68 ± 10%	2.52 MHz	1.117	0.37
TL91-2-103M	10 ± 20%	2.52 MHz	0.10	1.5	TL91-2-473K	47 ± 10%	2.52 MHz	0.37	0.72
TL91-2-123M	12 ± 20%	2.52 MHz	0.12	1.4	TL91-2-563K	56 ± 10%	2.52 MHz	0.42	0.68
TL91-2-153M	15 ± 20%	2.52 MHz	0.14	1.3	TL91-2-683K	68 ± 10%	2.52 MHz	0.46	0.61
TL91-2-183M	18 ± 20%	2.52 MHz	0.15	1.2	TL91-2-823K	82 ± 10%	2.52 MHz	0.60	0.58
TL91-2-223M	22 ± 20%	2.52 MHz	0.18	1.1	TL91-2-104K	100 ± 10%	1 kHz	0.70	0.52
TL91-2-273K	27 ± 10%	2.52 MHz	0.20	0.97	TL91-2-124K	120 ± 10%	1 kHz	0.93	0.48
TL91-2-333K	33 ± 10%	2.52 MHz	0.23	0.88	TL91-2-154K	150 ± 10%	1 kHz	1.10	0.40
TL91-2-393K	39 ± 10%	2.52 MHz	0.32	0.80	TL91-2-184K	180 ± 10%	1 kHz	1.38	0.38
TL91-3-103M	10 ± 20%	2.52 MHz	0.08	1.44	TL91-3-683K	68 ± 10%	2.52 MHz	0.33	0.59
TL91-3-123M	12 ± 20%	2.52 MHz	0.09	1.39	TL91-3-823K	82 ± 10%	2.52 MHz	0.41	0.54
TL91-3-153M	15 ± 20%	2.52 MHz	0.10	1.24	TL91-3-104K	100 ± 10%	1 kHz	0.48	0.51
TL91-3-183M	18 ± 20%	2.52 MHz	0.11	1.12	TL91-3-124K	120 ± 10%	1 kHz	0.54	0.49
TL91-3-223M	22 ± 20%	2.52 MHz	0.13	1.07	TL91-3-154K	150 ± 10%	1 kHz	0.75	0.40
TL91-3-273M	27 ± 20%	2.52 MHz	0.15	0.94	TL91-3-184K	180 ± 10%	1 kHz	1.02	0.36
TL91-3-333K	33 ± 10%	2.52 MHz	0.17	0.85	TL91-3-224K	220 ± 10%	1 kHz	1.20	0.31
TL91-3-393K	39 ± 10%	2.52 MHz	0.22	0.74	TL91-3-274K	270 ± 10%	1 kHz	1.31	0.29
TL91-3-473K	47 ± 10%	2.52 MHz	0.25	0.68	TL91-3-334K	330 ± 10%	1 kHz	1.50	0.28
TL91-3-563K	56 ± 10%	2.52 MHz	0.28	0.64					
TL91-4-103M	10 ± 20%	2.52 MHz	0.07	2.30	TL91-4-823K	82 ± 10%	2.52 MHz	0.37	0.78
TL91-4-123M	12 ± 20%	2.52 MHz	0.08	2.00	TL91-4-104K	100 ± 10%	1 kHz	0.43	0.72
TL91-4-153M	15 ± 20%	2.52 MHz	0.09	1.80	TL91-4-124K	120 ± 10%	1 kHz	0.47	0.66
TL91-4-183M	18 ± 20%	2.52 MHz	0.10	1.60	TL91-4-154K	150 ± 10%	1 kHz	0.64	0.58
TL91-4-223M	22 ± 20%	2.52 MHz	0.11	1.50	TL91-4-184K	180 ± 10%	1 kHz	0.71	0.51
TL91-4-273M	27 ± 20%	2.52 MHz	0.12	1.30	TL91-4-224K	220 ± 10%	1 kHz	0.96	0.49
TL91-4-333K	33 ± 10%	2.52 MHz	0.13	1.20	TL91-4-274K	270 ± 10%	1 kHz	1.11	0.42
TL91-4-393K	39 ± 10%	2.52 MHz	0.16	1.10	TL91-4-334K	330 ± 10%	1 kHz	1.26	0.40
TL91-4-473K	47 ± 10%	2.52 MHz	0.18	1.10	TL91-4-394K	390 ± 10%	1 kHz	1.77	0.36
TL91-4-563K	56 ± 10%	2.52 MHz	0.24	0.94	TL91-4-474K	470 ± 10%	1 kHz	1.96	0.34
TL91-4-683K	68 ± 10%	2.52 MHz	0.28	0.85					
TL91-5-103M	10 ± 20%	2.52 MHz	0.06	2.60	TL91-5-104K	100 ± 10%	1 kHz	0.35	0.97
TL91-5-123M	12 ± 20%	2.52 MHz	0.07	2.45	TL91-5-124K	120 ± 10%	1 kHz	0.40	0.89
TL91-5-153M	15 ± 20%	2.52 MHz	0.08	2.27	TL91-5-154K	150 ± 10%	1 kHz	0.47	0.78
TL91-5-183M	18 ± 20%	2.52 MHz	0.09	2.15	TL91-5-184K	180 ± 10%	1 kHz	0.63	0.72
TL91-5-223M	22 ± 20%	2.52 MHz	0.10	1.96	TL91-5-224K	220 ± 10%	1 kHz	0.73	0.66
TL91-5-273M	27 ± 20%	2.52 MHz	0.11	1.76	TL91-5-274K	270 ± 10%	1 kHz	0.97	0.57
TL91-5-333M	33 ± 20%	2.52 MHz	0.12	1.50	TL91-5-334K	330 ± 10%	1 kHz	1.15	0.52
TL91-5-393M	39 ± 20%	2.52 MHz	0.14	1.37	TL91-5-394K	390 ± 10%	1 kHz	1.30	0.48
TL91-5-473K	47 ± 10%	2.52 MHz	0.17	1.28	TL91-5-474K	470 ± 10%	1 kHz	1.48	0.42
TL91-5-563K	56 ± 10%	2.52 MHz	0.19	1.17	TL91-5-564K	560 ± 10%	1 kHz	1.90	0.33
TL91-5-683K	68 ± 10%	2.52 MHz	0.22	1.11	TL91-5-684K	680 ± 10%	1 kHz	2.25	0.28
TL91-5-823K	82 ± 10%	2.52 MHz	0.25	1.00	TL91-5-824K	820 ± 10%	1 kHz	2.55	0.24

Телефон в Москве +7 (499) 500 94 02;  
Телефон в Минске +375 (29) 707 79 46;

E-mail: [belterrtrans@gmail.com](mailto:belterrtrans@gmail.com)  
Веб-сайт: <http://belterrtrans.com/>