

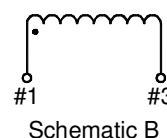
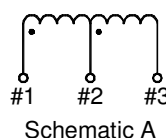
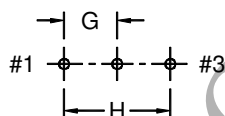
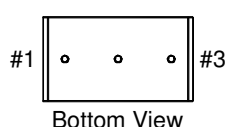
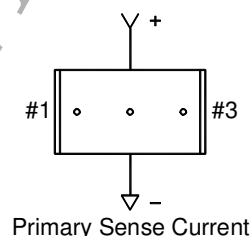
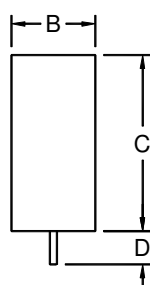
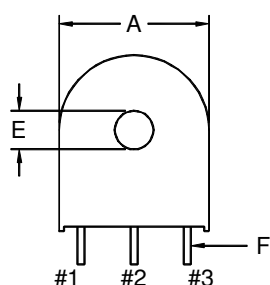
# Датчик тока регулирующий SWITCH MODE CURRENT SENSOR

SWITCH MODE  
CURRENT SENSOR



## TL59 Series

- For SMPS current feedback and over-current detection applications
- Sense up to 15 Amps RMS continuously
- Useful operation to beyond 200 kHz
- Secondary fully isolated to >2500 VRMS
- Rated for up to 100 volts peak output
- Center-tap option available on all models



	A	B	C	D	E	F	G	H	Weight (g)
<b>Dimension (mm)</b>	18.2	10.4	21.3	3.5	∅4.3	∅0.8	6.35	12.7	6
<b>Tolerance (mm)</b>	max.	max.	max.	min.	min.	± 0.1	± 0.5	± 0.5	approx.

Part Number	Transfer Ratio Pri : Sec (± 1%)	Secondary Current (mA, max.)	Secondary Inductance (mH, min.)	Secondary DC Resistance (Ω, max.)	Secondary Excitation		Electrical Schematic
					25kHz (μVS, max.)	100kHz (μVS, max.)	
TL59-50CT	25 + 25	300	5.5	0.3 + 0.3	300	150	A
TL59-50	50	300	5.5	0.6	300	150	B
TL59-100CT	50 + 50	150	22	0.7 + 0.7	600	300	A
TL59-100	100	150	22	1.4	600	300	B
TL59-150CT	75 + 75	100	50	1.5 + 1.5	750	375	A
TL59-150	150	100	50	3.0	750	375	B
TL59-200CT	100 + 100	75	89	2.5 + 2.5	1200	600	A
TL59-200	200	75	89	5.0	1200	600	B
TL59-300CT	150 + 150	50	200	6.0 + 6.0	1800	900	A
TL59-300	300	50	200	12.0	1800	900	B
TL59-500CT	250 + 250	30	550	15.0 + 15.0	3000	1500	A
TL59-500	500	30	550	30.0	3000	1500	B
TL59-750CT	375 + 375	20	1125	35.0 + 35.0	4500	2250	A
TL59-750	750	20	1125	70.0	4500	2250	B

Телефон в Москве +7 (499) 500 94 02;  
Телефон в Минске +375 (29) 707 79 46;

E-mail: [belterratrans@gmail.com](mailto:belterratrans@gmail.com)  
Веб-сайт: <http://belterratrans.com>



БелТерраТранс-официальный торговый партнер Thai Lin Radio в России и Беларуси. -